



MONTHLY MEMBERSHIP PROGRESS REPORT

District 325B2

Results as of: 5/31/2017

GMT: NAZMUL HAQUE

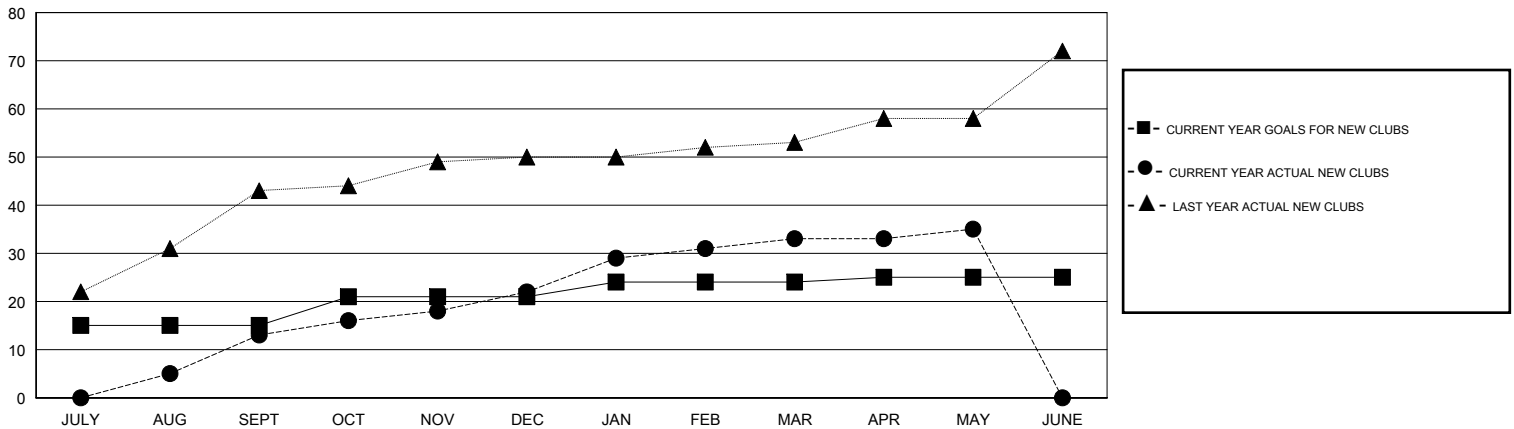
LOCATION NEPAL

GMT CA

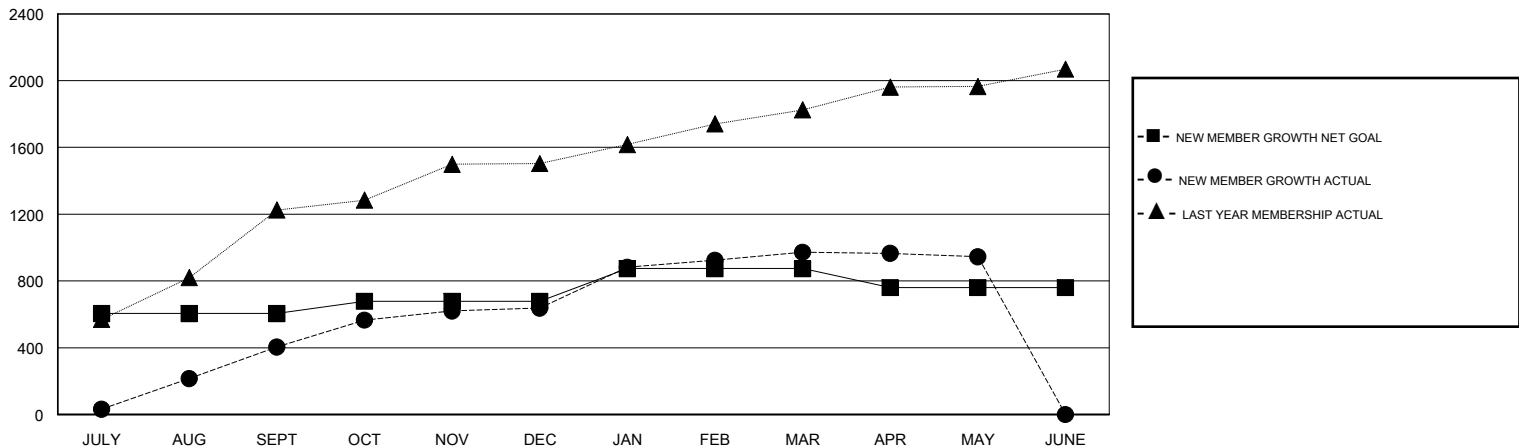
Clubs			
RESULTS FOR 2016-2017			
QUARTER	NEW CLUB GOAL	NEW CLUBS	DROPPED CLUBS
JULY/AUG/SEPT	15	13	1
OCT/NOV/DEC	6	9	2
JAN/FEB/MAR	3	11	2
APR/MAY/JUNE	1	2	1

Members			
RESULTS FOR 2016-2017			
QUARTER	NEW MEMBER GROWTH NET GOAL (not reinstated or transfers)	NEW MEMBER GROWTH ACTUAL (not reinstated or transfers)	DROPPED MEMBERS ACTUAL (including transfers)
JULY/AUG/SEPT	605	607	203
OCT/NOV/DEC	73	517	284
JAN/FEB/MAR	196	536	201
APR/MAY/JUNE	-114	112	139

GOALS AND ACTUAL NEW CLUBS CUMULATIVE



GOALS AND ACTUAL MEMBERS CUMULATIVE



DROPPED CLUBS: 6	214 CLUBS OF 306 ADDED 1 OR MORE NEW MEMBERS	<u>GENDER DISTRIBUTION</u>	
DROPPED MEMBERS		MALE	6,447 (80.72%)
DECEASED	7	FEMALE	1,540 (19.28%)
CLUB CANCELLED	61	TOTAL FAMILY UNIT MEMBERS	
OTHER	759	4,149	
TOTAL	827	FAMILY MEMBERS PAYING HALF DUES	
		2,530	

[CLICK HERE FOR CUMULATIVE MEMBERSHIP DATA](#)